

KINGDOM OF TONGA

Palani Sekitoa Ngoue 'a Tonga (TASP)

Ko e Palani Fakangoue ni, koe konga pe ia 'o e Palani fakafonua 'o Tonga; pea 'oku ne fakahaa'i ' ae visone mo e ngaahi fakahokohoko tokoni tokoni, ke fakapapau'i 'oku ma'u mei he Sekitoa ngoue 'a e tupu faka'ekonomika lahi taha, mo e ma'u'anga me'atokoni malu mo tolonga, 'i ha mamani 'oku feliliuaki hono 'Ekonomika mo hono 'Ea. Ko e Palani Fakangoue ni, tene fakatu'umalie'i 'a e ngaahi kolo ki 'uta, fakalahi ange mo e ngaahi ngoue uta ki muli pea fakasi'isi'i e hu mai ' a e kakano'i manu.

Ko e Ngaahi Taumu'a mo e Ola 'oku 'Amanaki Kiai

Taumu'a	Fakalahi mo Tauhi e tu'unga 'o e ngoue 'i he ma'u'anga mo'ui		Taketu 'osi e ta'u 'e 5
'UHINGA hono Ngaahi	<p>Ma'u'anga mo'ui - Ha founa ngoue kehekehe fe'unga moe 'ea, ki he ma'u me'atokoni, malu, hao mo fakatupu mo'ui lelei</p>	<p>Fakakomesiale Fakalahi mo tauhi ke tu'uma'u e ma'u'anga mo'ui, 'aki hono fakalahi e ngoue uta ki muli pea fakasi'isi'i e hu koloa hu mei muli</p>	<ul style="list-style-type: none"> • 5% tupu fakata'u 'i he hu mai fakangoue kihe T\$9,177 • 10% tupu fakata'u 'i he vesitapolo uta ki muli ki he toni 'e 15,590 pe T\$819.7 miliona • 10% holo fakata'u 'i he kakano'i manu hu mai ki he toni 'e 4,600 pe T\$22.8 miliona
Ngaahi Kaveinga Kehekehe	<p>Fokotu'u ha founa ngoue fe'unga mo e 'ea, ke malu'i'aki e ngaahi koloa fakaenatula mahu'inga (kelekele lelei, vai, ngaahi founa kehekehe, ngaahi komiuniti fiemalie.</p>	<p>Fakalelei'i e 'ataakai (ngaahi founa mo e tu'utu'uni ngaue ki he vai/ kelekekele; ngoue uta ki tu'apuleanga mo e koloa hu mai; kelekele fakapa'anga; va fakava'ha Pule'anga, ngaahi lao, fakamatata maketi etc.</p>	

TASP 'Ata totonu 'o e Palani

Polokalama 1 mo e 2, ko e ongo kaveinga fekolosi'aki ke langa ha fakava'e ke pou pou'l e ongo Polokalama 3 mo e 4; 'i he ma'u'anga mo'ui tolonga mo e koloa 'oku uta ki muli.



Polokalama 1:
'Atakai moe Feliliuaki 'o e 'Ea

Ke fakapapau'l 'oku fakatolonga e ngaahi koloa fakaenautla 'a Tonga, 'o siofi hono langa hake'o e 'ilo ki he ngaahi Tukunga kehekehe 'o e 'ataakai

Polokalama 2:
Fakaivia 'o e 'Atakai

Siofi hono fakalelei'l 'o e 'ataakai lolotonga ki he sekitoa ngoue (Pule'l, ngaahi lao mo hono tauhi, fakahoko fatongia mo e kolonitini).

Polokalama 3:
Ngaahi ma'u'anga mo'ui tolonga, mo e ngaahi me'akai mo'ui lelei

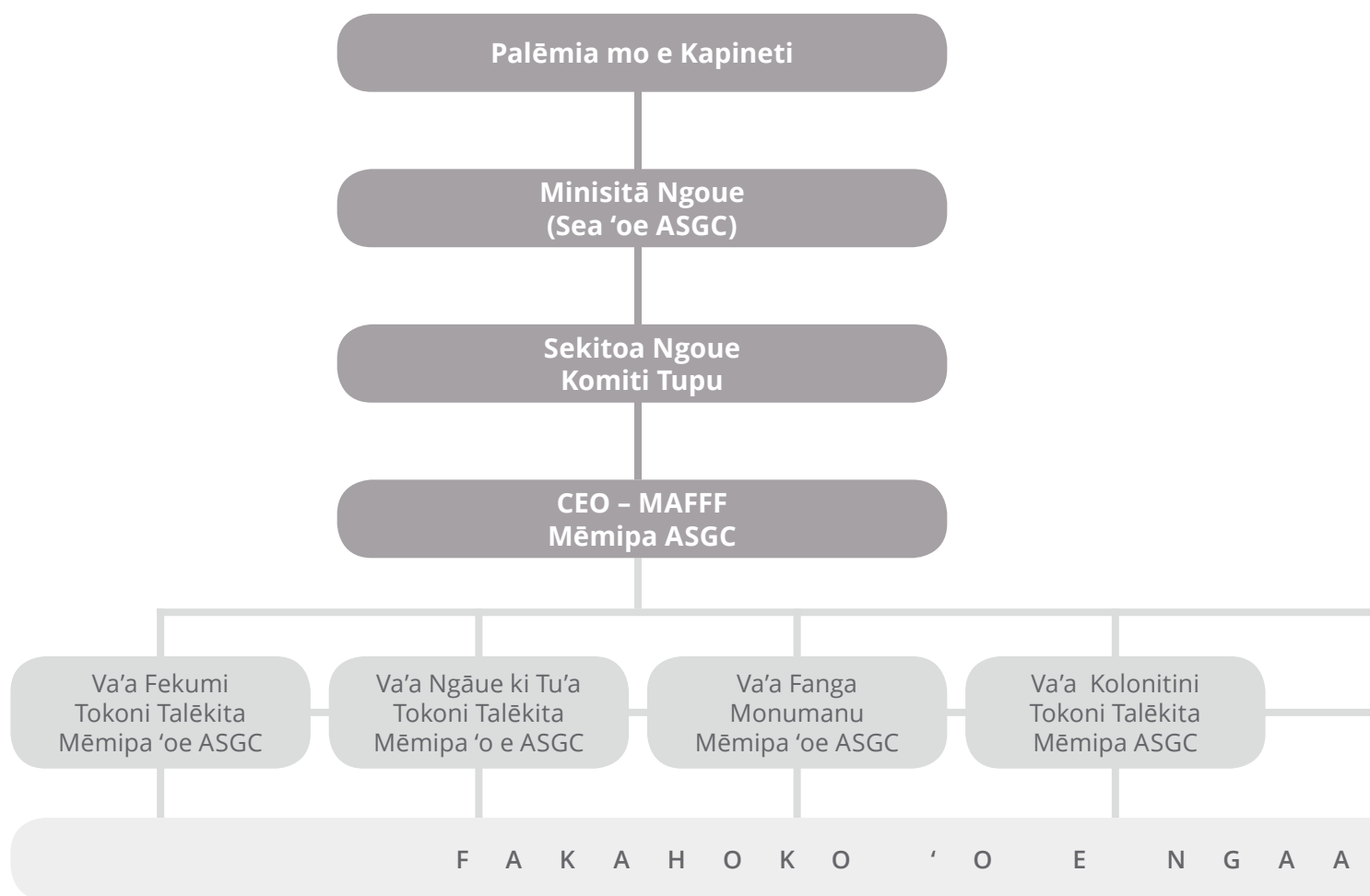
Siofi hono fakalelei'l e 'ilo 'a e tangata ngoue mo e ngaahi tekinolosia ki he fetu'utaki 'a e 'Ea, mo e ngaahi founa ngoue mo e tauhi monumanu kehekehe mo hono fakamaketi'l 'o e ngaahi koloa ni.

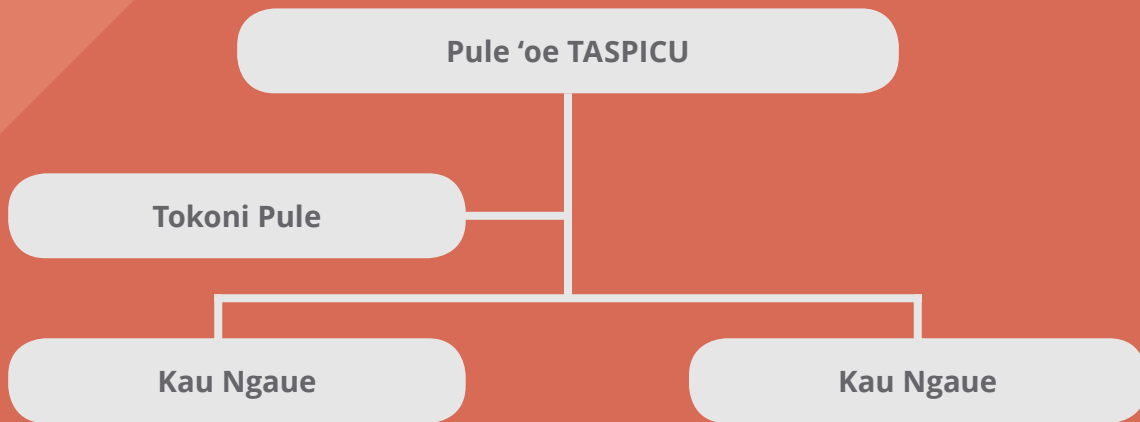
Polokalama 4:
Tupu tu'uloa mo e Pa'anga Hu mai mei Mulii

Siofi hono fakalahiange 'oe koloa hu atu mo fakalahi hano ngaahi ha fetongi 'o e ngaahi koloa ngoue hu mai

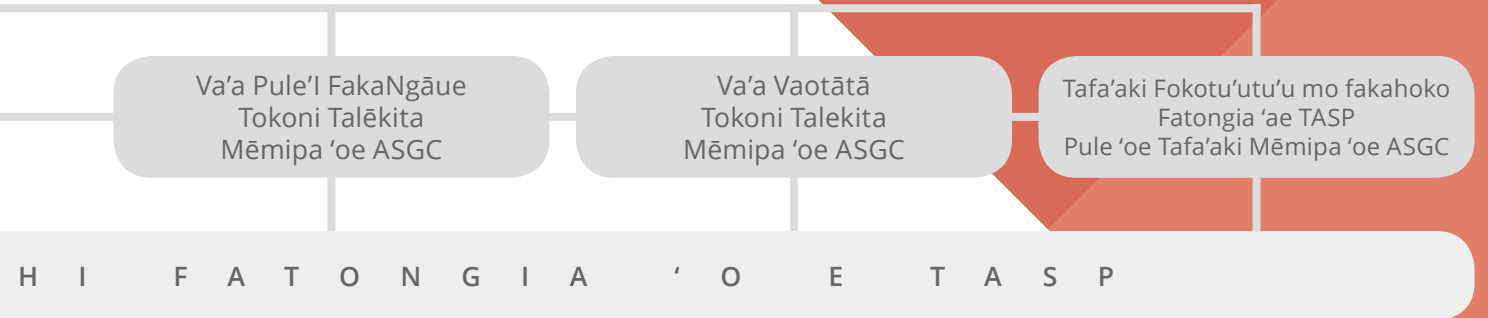
Ngaahi Fokotu'utu'u ki hono Fakahoko

'E fokotu'u ha 'iuniti fakahoko ngaue fo'ou 'a e Palani Sekitoa Ngoue 'o Tonga (TASPICU) 'I he Potungaue Ngoue – MAFFF ke tokoni ki hono fokotu'utu'u mo fakahoko e ngaahi fatongia 'o e TASP, 'I he Va'a 'e 6 'o e MAFFF; pea mo tu'a foki (hange ko hono fokotu'u ha ngaahi tu'u'anga fakamatala 'ea 'I he Potungaue Fakamatala 'Ea 'o Tonga). 'Oku 'I ai e visone 'I he 'osi e ta'u 'e 5, kuo 'osi fakahoko 'e he ngaahi Va'a 'e 6 lolotonga 'o e Potungaue Ngoue (MAFFF) 'a e ngaahi fatongia 'oe TASPICU.





TASPICU – Ko e ki’l ‘iuniti si’isi’i pe ‘ihe MAFFF, ‘oku ‘iai hono Pule moe Tokoni moe ki’i kau ngaue tokosi’i pe ke fakafaingofua’i e ngaue fakapa’anga. Ko e Pule ‘oku memipa ‘ihe ASGC, pea tene nague vaofi moe kau Tokoni Talekita, moe CEO ‘oe MAFFF ke siofi hono fakahoko ‘oe ngaahi fatongia ‘oe TASP ‘i loto ‘ihe MAFFF, mo tu’a foki. ‘E lipooti hokohoko pe kihe ASGC ‘a e fakahoko ngaue ‘ae TASP ‘oku fai.



Patiseti

Ko e 'uluaki ta'u 'e 5 'oe TASP 'e fe'unga mo e T\$42.169miliono hono mahu'inga pea ko e konga lahi 'o e patiseti 'e ma'u ia 'e he Polokalama 3 moe Polokalama Pule'I ('a ia 'e toki fokotu'u hili ha toe fakalelei'I 'e fai ki he MAFFF). 'Oku te'eki ke fakapa'anga'I 'ae ta'u nima hono ua.

Fakaikiiki 'o e Ngaahi Totongi 'ae TASP

Polokalama 1: Tu'unga 'oe 'Ea moe Ngoue

SO.1.1: Kelekele lelei moe ma'u'anga vai Tolonga

SO.1.2: Ngaahi Fakahinohino mo e faka'ilonga 'o e fkmatala 'ea

SO.1.3: Fokotu'u Founga Ngoue fe'unga moe nunu'a 'o e feliliuaki 'o e 'Ea

Katoa

Polokalama 2: Fakalelei'I e Tu'unga 'o e 'Ea

SO.2.1: Polisi fakasekitoa

SO.2.2: Ngaahi Polisi fakafisikale

SO.2.3 : Ngaahi Polisi Koloa hu atu mo hu mai

SO.2.4: Ngaahi Polisi Fakapa'anga ki he kelekele

SO.2.5 Ngaahi Va Fkvaha'a Pule'anga

SO.2.6: Ngaahi Lao moe Tu'utu'uni

SO.2.7: Kolonitini

SO.2.8: Ngaahi Kautaha Ngaue

SO.2.9: Fakamatala Fakamaketi

SO.2.10: Fakamatala 'Ea fkgoue

Katoa

Polokalama 3: Ma'u'anga Mo'ui Tolonga moe Me'atokoni Mo'ui lelei

SO.3.1: 'Ilo moe founga 'a e kau ngoue

SO.3.2: To'utupu 'ihe Ngoue

SO.3.3: Ngaahi Koloa fkgoue ke fktauatu

Katoa

Polokalama 4: Tupu 'oku Tolonga moe fetongi Pa'anga muli

SO.4.1: Koloa Hu atu

SO.4.2: Fetongi Koloa Hu mai

Katoa

Polokalama Tokanga'I 'oe TASP

Me'alele , Me'angaue moe Naunau

Ako moe Tokoni Fktekinikale

Vahenga moe Ngaahi Me'a'ofa

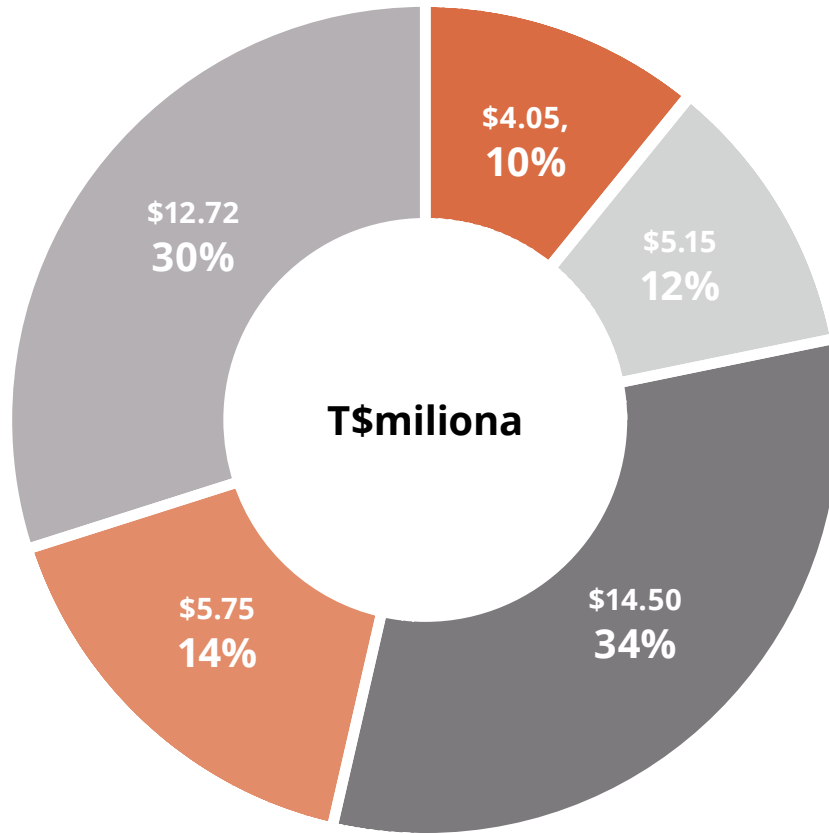
Totongi fakalele 'Ofisi






Tauhi mo Tokanga'I Me'alele

Katoa

FAKAKATOA

	(T\$'000)							
	Year 1	Year 2	Year 3	Year 4	Year 5	Total	%	
	\$895	\$922	\$515	\$139	\$150	\$2,621		
	\$95	\$60	\$55	\$5	\$5	\$220		
	\$513	\$343	\$343	\$5	\$5	\$1,208		
	\$1,503	\$1,325	\$913	\$149	\$160	\$4,049	10%	
	\$503	\$50	\$0	\$0	\$0	\$553		
	\$278	\$15	\$15	\$15	\$105	\$428		
	\$0	\$63	\$18	\$63	\$18	\$160		
	\$98	\$25	\$75	\$25	\$75	\$298		
	\$38	\$38	\$38	\$38	\$38	\$190		
	\$23	\$23	\$23	\$23	\$23	\$115		
	\$250	\$250	\$250	\$250	\$250	\$1,250		
	\$63	\$63	\$63	\$63	\$63	\$315		
	\$75	\$75	\$75	\$75	\$75	\$375		
	\$259	\$492	\$242	\$242	\$242	\$1,477		
	\$1,587	\$1,094	\$799	\$794	\$889	\$5,161	12%	
	\$350	\$95	\$118	\$160	\$193	\$915		
	\$948	\$350	\$350	\$350	\$350	\$2,348		
	\$0	\$1,974	\$2,315	\$3,032	\$3,914	\$11,235		
	\$1,298	\$2,419	\$2,783	\$3,542	\$4,457	\$14,498	34%	
	\$90	\$1,247	\$957	\$912	\$912	\$4,118		
	\$0	\$713	\$510	\$310	\$100	\$1,633		
	\$90	\$1,960	\$1,467	\$1,222	\$1,012	\$5,751	14%	
	\$1,211	\$0	\$0	\$0	\$927	\$2,138		
	\$1,420	\$1,008	\$1,008	\$0	\$0	\$3,437		
	\$843	\$843	\$843	\$843	\$843	\$4,215		
	\$398	\$353	\$353	\$353	\$398	\$1,857		
	\$215	\$215	\$215	\$215	\$215	\$1,077		
	\$4,087	\$2,419	\$2,419	\$1,411	\$2,383	\$12,724	30%	
	\$8,565	\$9,217	\$8,381	\$7,118	\$8,901	\$42,183	100%	



-  **P1: Tu'unga 'oe 'Ea moe Ngoue**
-  **P2: Fakalelei'l e Tu'unga 'o e 'Ea**
-  **P3: Ma'u'anga Mo'ui Tolonga moe Me'atokoni Mo'ui lelei**
-  **P 4: Tupu 'oku Tolonga moe fetongi Pa'anga**
-  **Polokalama Tokanga'l 'oe TASP**