



KINGDOM OF TONGA

Tonga Agriculture Sector Plan (TASP)

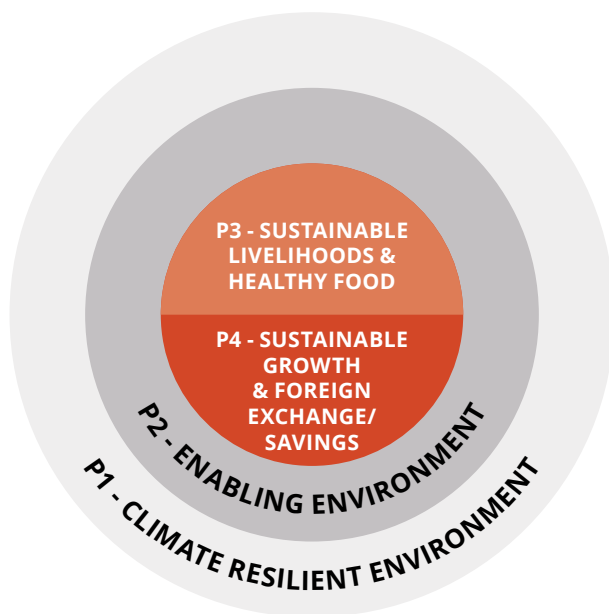
As part of Tonga's national planning process, the Tonga Agriculture Sector Plan (TASP) presents the vision and priorities to maximise contributions from the agriculture sector to the Kingdom's economic growth and sustained food security in the face of a changing world economy and looming climate change. TASP is expected to boost rural incomes and agriculture exports and displace meat imports.

Strategic Objectives and Expected Outcomes

Goal	Increase and sustain resilient agriculture livelihoods		Target by Year 5
Production-oriented	Develop diverse, climate resilient farming systems for food/ nutritional security and improved livelihoods	Commercial - Increase and sustain rural incomes with rising exports and import substitution	<ul style="list-style-type: none"> • 5% annual growth in rural incomes to T\$9,177 • 10% annual growth in vegetable exports to 15,590Mt or T\$19.7m per household/yr • 10% annual decline in meat imports to 4,600Mt or T\$22.8m
Cross-cutting themes	Establish climate resilient agriculture systems to preserve key natural resources (healthy soils, sustainable water, diverse systems, adaptive communities)	Improve enabling environment (institutional/service capacity, policies on soil/water, exports/ imports & land/rural finance, international relations, regulations, industry organisations, market information)	

TASP Focus

Programmes 1 and 2 are cross-cutting themes that build the foundation to support supporting the two production-oriented Programmes (3 and 4) on sustainable livelihoods and exports.



Programme 1:
Climate resilient environment

Acts to ensure that Tonga's key natural resources are preserved, with a focus on building knowledge of the underlying environmental conditions.

Programme 2:
Enabling environment

Focuses on improving the operating environment for the agriculture sector (governance, regulations and compliance, service delivery, quarantine).

Programme 3:
Sustainable livelihoods and healthy foods

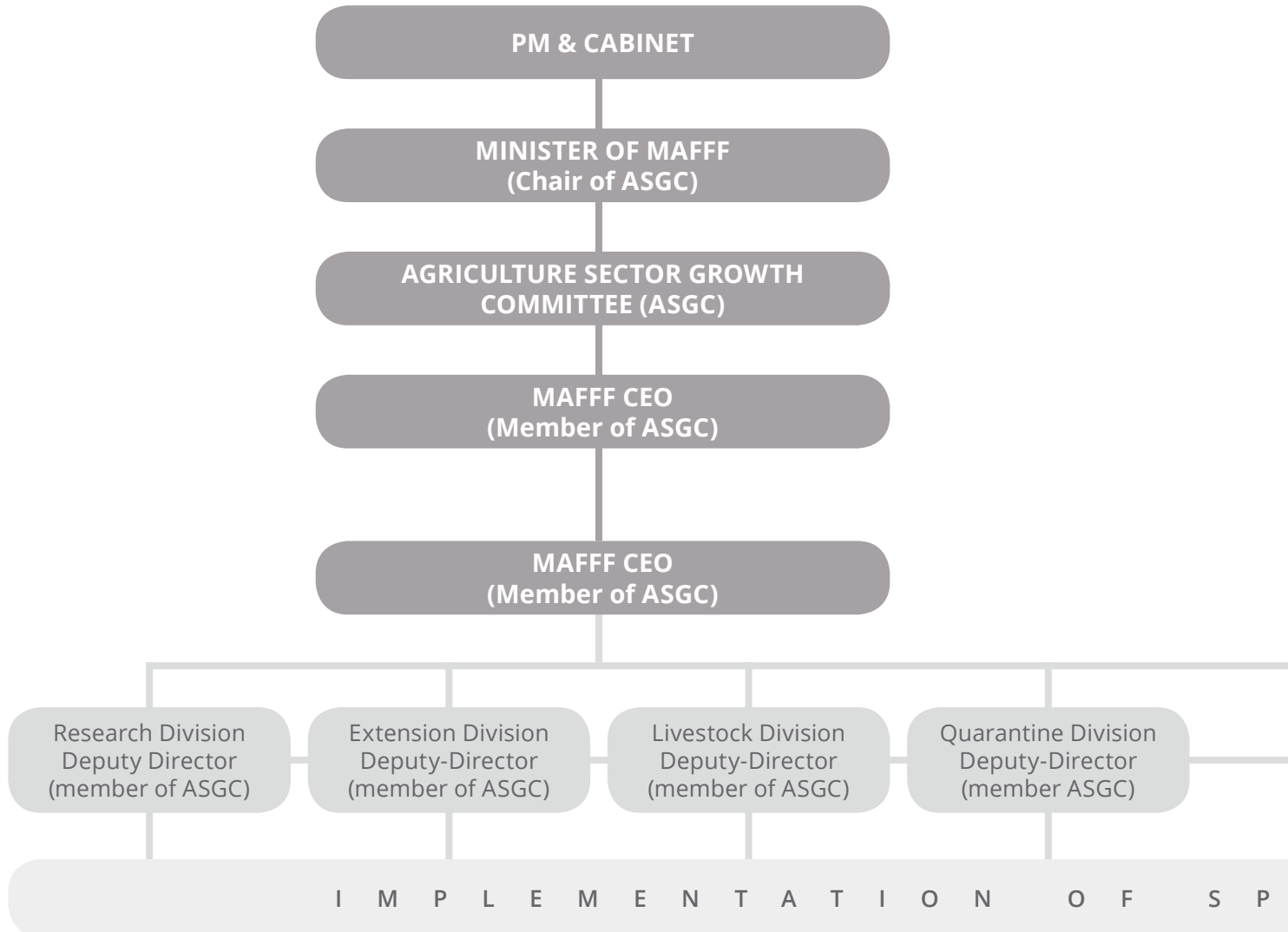
Focuses on improving farmers' knowledge and technologies for climate-resilient and diversified crop and livestock production systems, and the marketing of these products.

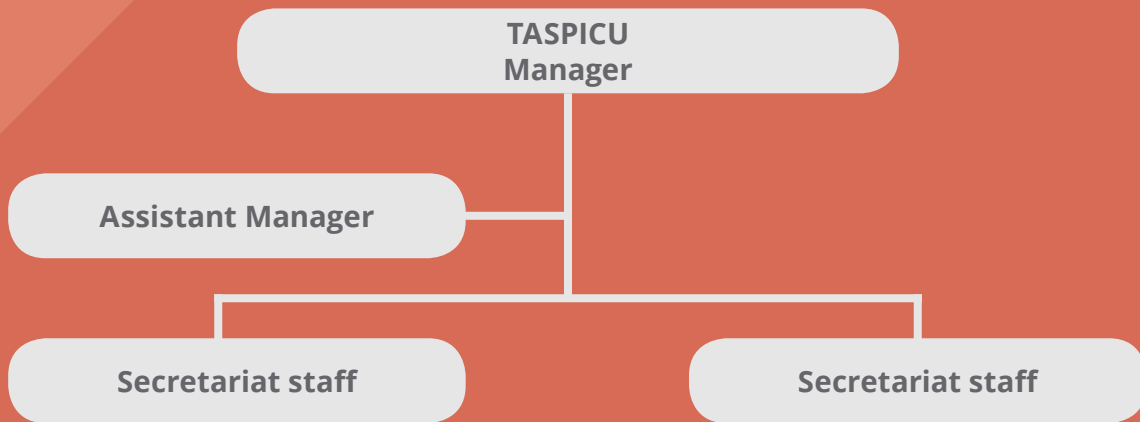
Programme 4:
Sustainable growth and foreign exchange earnings

Focuses on increased exports, and increased production of import replacement agriculture products.

Implementation Arrangements

A new TASP Implementation and Coordination Unit (TASPICU) will be set up within MAFFF to assist and coordinate implementation of TASP activities within the 6 existing Divisions of MAFFF as well as externally (e.g. setting-up weather stations by Tonga Met). It is envisaged that MAFFF's Corporate Division would absorb the functions of TASPICU after 5 years.





TASPICU is a small unit within MAFFF comprising of a Manager and Assistant Manager plus a small secretariat staff to facilitate funding applications. A member of ASGC, the Manager will also work closely with the Deputy-Directors and CEO of MAFFF to enable and monitor implementation of TASP activities within and outside MAFFF. Reporting on implementation of TASP activities will be made regularly to ASGC.



E C I F I C T A S P A C T I V I T I E S

Budget

The first five-year phase of the TASP will cost T\$42.169 million with Programme 3 and Programme Management (to be revised after conclusion of MAFFF institutional review) responsible for majority of the budget. The second five year phase is un-costed.

Detailed TASP Costs

Programme 1: Climate Resilient Environment

SO 1.1: Healthy Soils & Sustainable Water

SO 1.2: Climate Resilient (CR) Guidelines & Indicators

SO 1.3: Building Agriculture Resilient to Impact of Climate Change

Subtotal

Programme 2: Enabling Environment

SO 2.1: Sector Institutional Policy

SO 2.2: Bio-Physical Policies

SO 2.3: Export & Import Policies

SO 2.4: Land & Rural Finance Policies

SO 2.5: International Relationships

SO 2.6: Compliance & Regulations

SO 2.7: Quarantine

SO 2.8: Industry Organizations

SO 2.9: Market Information Support

SO 2.10: Agro-Met Services

Subtotal

Programme 3: Sustainable Livelihoods & Healthy Food

SO 3.1: Farmers' Knowledge & Practices

SO 3.2: Young People in Agriculture

SO 3.3: Saleable Agriculture Products

Subtotal

Programme 4: Sustainable Growth & Foreign Exchange Earnings

SO 4.1: Export Sales

SO 4.2: Import Replacement

Subtotal

TASP Programme Management

Vehicles, Equipment & Materials

Training & Technical Assistance

Salaries & Allowances

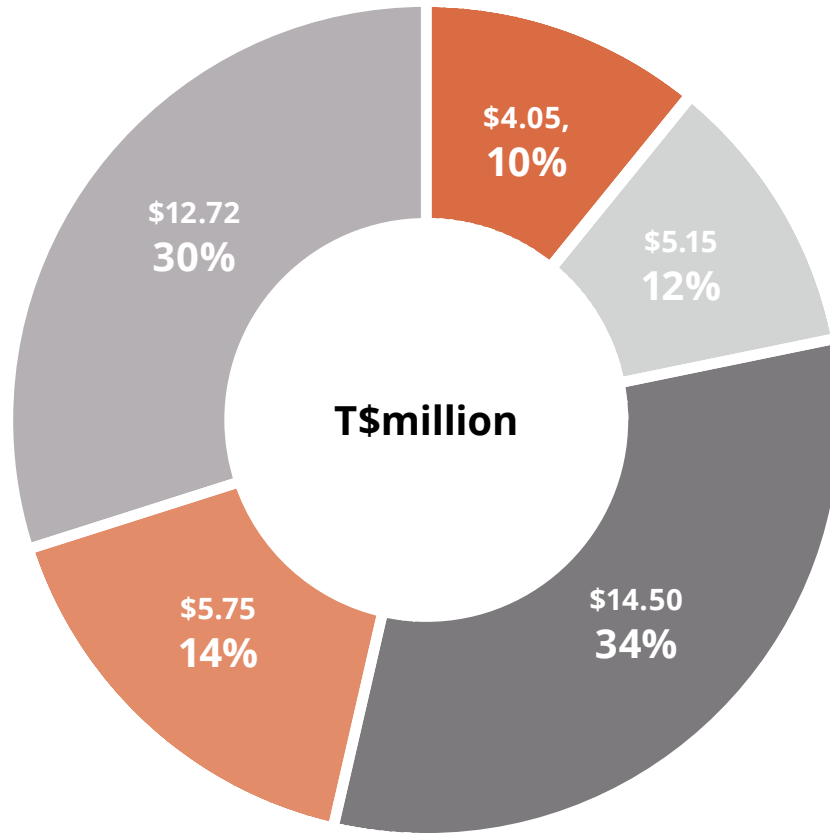
Office Operating Costs

Vehicle Operation & Maintenance

Subtotal

TOTAL

	(T\$'000)						
	Year 1	Year 2	Year 3	Year 4	Year 5	Total	%
	\$895	\$922	\$515	\$139	\$150	\$2,621	
	\$95	\$60	\$55	\$5	\$5	\$220	
	\$513	\$343	\$343	\$5	\$5	\$1,208	
	\$1,503	\$1,325	\$913	\$149	\$160	\$4,049	10%
	\$503	\$50	\$0	\$0	\$0	\$553	
	\$278	\$15	\$15	\$15	\$105	\$428	
	\$0	\$63	\$18	\$63	\$18	\$160	
	\$98	\$25	\$75	\$25	\$75	\$298	
	\$38	\$38	\$38	\$38	\$38	\$190	
	\$23	\$23	\$23	\$23	\$23	\$115	
	\$250	\$250	\$250	\$250	\$250	\$1,250	
	\$63	\$63	\$63	\$63	\$63	\$315	
	\$75	\$75	\$75	\$75	\$75	\$375	
	\$259	\$492	\$242	\$242	\$242	\$1,477	
	\$1,587	\$1,094	\$799	\$794	\$889	\$5,161	12%
	\$350	\$95	\$118	\$160	\$193	\$915	
	\$948	\$350	\$350	\$350	\$350	\$2,348	
	\$0	\$1,974	\$2,315	\$3,032	\$3,914	\$11,235	
	\$1,298	\$2,419	\$2,783	\$3,542	\$4,457	\$14,498	34%
	\$90	\$1,247	\$957	\$912	\$912	\$4,118	
	\$0	\$713	\$510	\$310	\$100	\$1,633	
	\$90	\$1,960	\$1,467	\$1,222	\$1,012	\$5,751	14%
	\$1,211	\$0	\$0	\$0	\$927	\$2,138	
	\$1,420	\$1,008	\$1,008	\$0	\$0	\$3,437	
	\$843	\$843	\$843	\$843	\$843	\$4,215	
	\$398	\$353	\$353	\$353	\$398	\$1,857	
	\$215	\$215	\$215	\$215	\$215	\$1,077	
	\$4,087	\$2,419	\$2,419	\$1,411	\$2,383	\$12,724	30%
	\$8,565	\$9,217	\$8,381	\$7,118	\$8,901	\$42,183	100%



-  **P1: Climate Resilient Environment**
-  **P2: Enabling Environment**
-  **P3: Sustainable Livelihoods & Healthy Food**
-  **P 4: Sustainable Growth & Foreign Exchange Earnings**
-  **TASP Programme Management**